



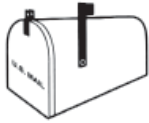
PARTS MANUAL
CRARY WIND SYSTEM

JOHN DEERE

930D

936D

HOW TO REACH US



WWW.CRARY.COM

ADDRESS	HOURS	TELEPHONE FAX NUMBER	E-MAIL INTERNET
Crary Industries, Inc. 237 12 th St. NW West Fargo, ND 58078	Monday-Friday 8 am-5pm (CST)	Parts and Service Ph: 701.282.5520 • 800.247.7335 Fax: 701.282.9522	Email: service@crary.com • sales@crary.com Online: www.crary.com

PLEASE SEND US YOUR WARRANTY CARD

Please take time to fill in the information requested on the card. When you send in the completed card to us, we register your Crary Wind System and start coverage under our limited warranty.

Two serial number stickers are included with each CWS. The decals are located on the CWS manifold. One sticker is to be placed on the warranty registration card and mailed back to Crary Industries. The second sticker is to be placed in the owners manual for future reference.

BUSINESS REPLY MAIL
FIRST-CLASS MAIL PERMIT NO. 1508 WEST FARGO ND
POSTAGE WILL BE PAID BY ADDRESSEE

CRARY COMPANY
 PO BOX 849
 WEST FARGO ND 58078-9973

NO POSTAGE
 NECESSARY
 IF MAILED
 IN THE
 UNITED STATES

Limited Warranty Registration
PLEASE PRINT OR TYPE

Name	Model Number
Street Address	Serial Number
City, State, Zip	Dealership Name
Telephone Number	Street Address
PRODUCT Finger Air Reel <input type="checkbox"/> Big Top <input type="checkbox"/> Cyclone (Chaff Spreader) <input type="checkbox"/> HYDRA-Stinger <input type="checkbox"/> Levelling Auger <input type="checkbox"/>	City, State, Zip
Combine Information Header Width: _____ Header Year: _____	Telephone Number
<input type="checkbox"/> John Deere <input type="checkbox"/> CaseIH <input type="checkbox"/> New Holland <input type="checkbox"/> AGCO	Purchase Date: ____ \ ____ \ ____

Your new Crary Ag Product is covered by a limited warranty. To initiate the warranty, this form **MUST** be completed and returned to CRARY Co. within 10 days of purchase.

Part # 12644

PARTS ORDERING INFORMATION

For service assistance or parts, contact your nearest authorized Crary dealer . Your nearest authorized Crary dealer will need to know the serial number of your Crary Wind System to provide the most efficient service. See below for information on how to identify and record the serial number for your Crary Wind System.

ILLUSTRATION AND TEXT

The arrangement of this parts catalog is for easy identification of the CWS parts. All parts are illustrated in either assembled or exploded views. All illustrations are located on the left hand page with the associated parts information on the right. Except for some common hardware, all parts are identified with an item number which corresponds to the "Item" column on the parts information page. The text pages list the reference number, part number, part description and the quantity required.

REPLACEMENT PARTS

Only genuine Crary replacement parts should be used to repair the CWS. Crary replacement parts are available from your Crary Dealer. To obtain prompt, efficient service, remember to give the dealer the correct part description and serial number of the CWS.

When ordering parts for your unit provide the following:

1. The SERIAL NUMBER of your CWS.
2. The PART NUMBER of the part.
3. The PART DESCRIPTION.
4. The QUANTITY needed.

 WARNING
We urge using only genuine replacement parts, which meet all the latest requirements. Replacement parts manufactured by others could present safety hazards, even though they may fit on this unit.

SERIAL NUMBER LOCATION

Always give your authorized Crary dealer the serial number of your CWS when ordering parts, requesting service, or any other information. Please record the serial number in the space provided below and on the warranty and registration card.

Serial Number _____

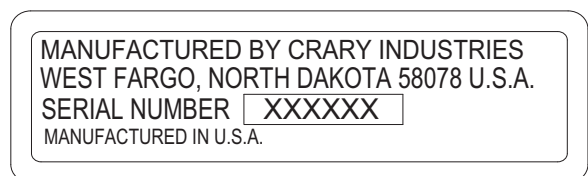


Figure 1, Serial # decal

Contents

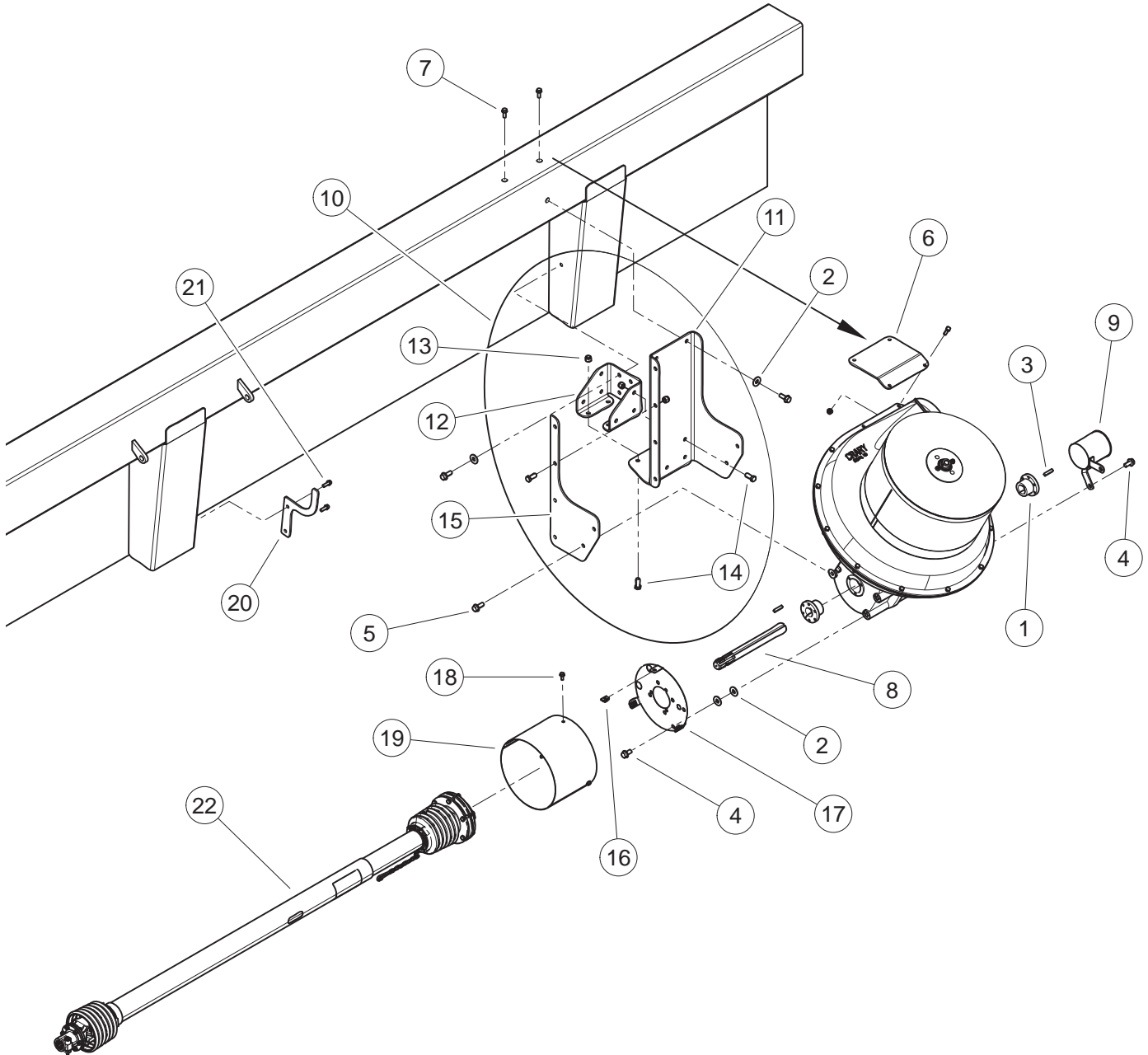
SECTION

PAGE

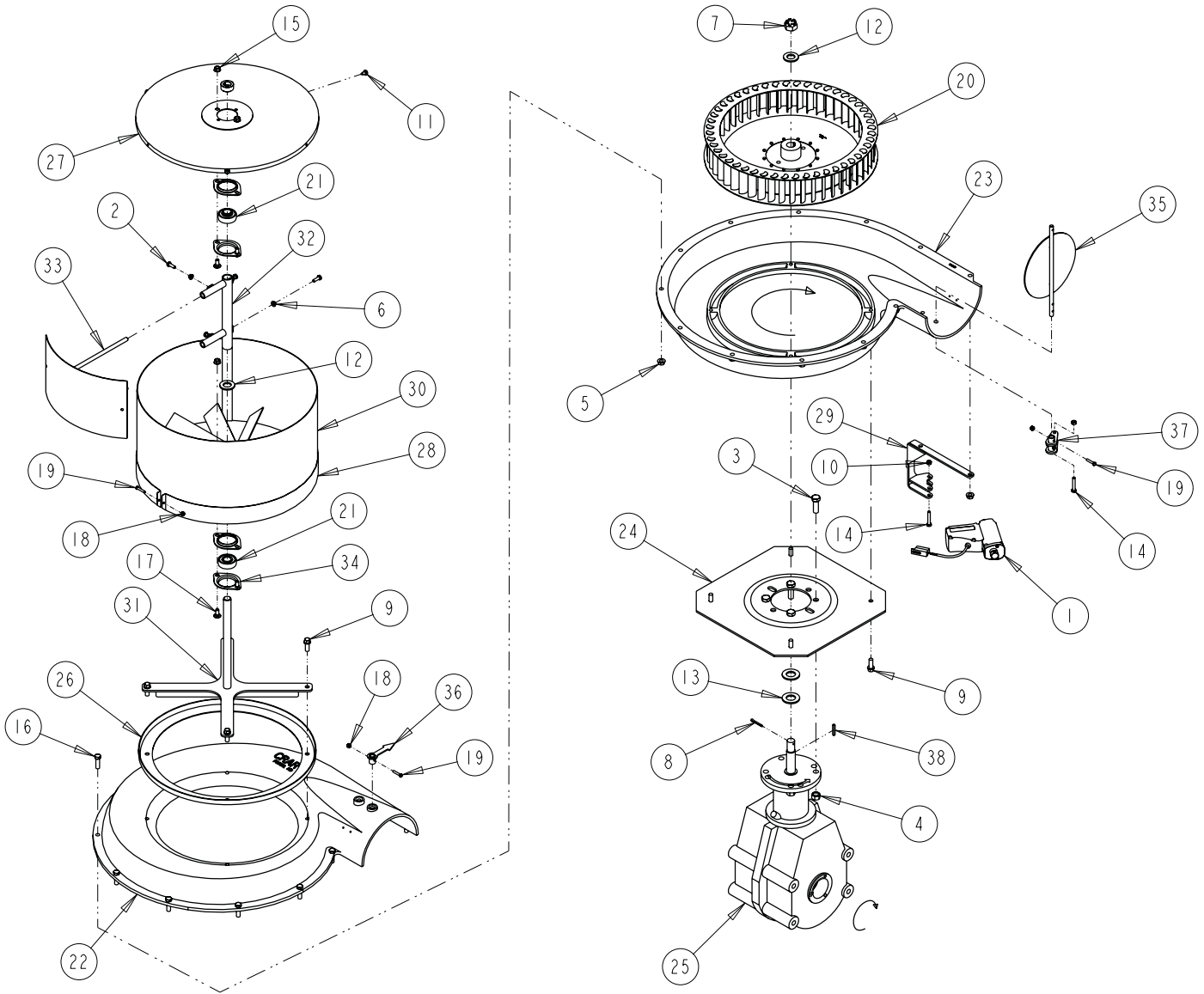
AIR MANIFOLD	16
DRIVELINE/C FLANGE ASSEMBLY	8
DROP TUBE KIT	18
FAN HOSE ASSEMBLY	10
GEARBOX/FAN	4
GEARBOX MOUNT/DRIVE KIT	2
GEARBOX REPLACEMENT PARTS	6
REEL ARM MOUNT (LH)	12
REEL ARM MOUNT (RH)	14
SWITCH/MOUNT PLATE	17
OPTIONS	21
KIT, SCREEN ELBOW	23
STATIC PRESSURE GAGE	22
PARTS INDEX.....	25

 CRARY  Parts Catalog
Crary Wind System

John Deere Headers
930D, 936D

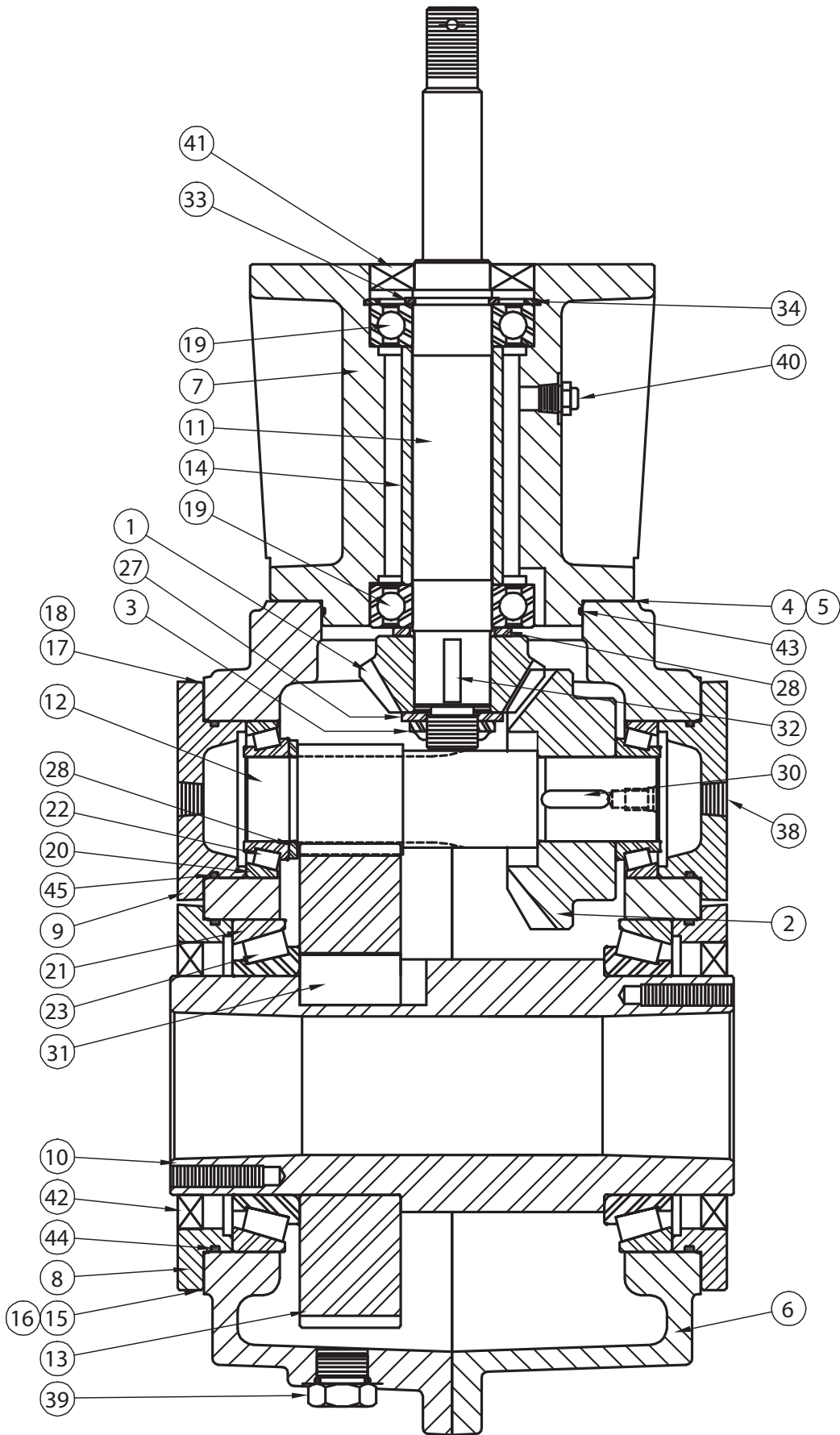


GEARBOX MOUNT/DRIVE KIT (53317)			
ITEM	PART NUMBER	DESCRIPTION	QTY
1	12457	BUSHING, SD 1-3/8"	2
2	15034	WASHER, 1/2" FLAT ZP	9
3	15498	KEY, 5/16 X 1-1/2" SQUARE	2
4	15611	BOLT, 1/2 X 1" SERR FLG	4
5	15612	BOLT, 1/2 X 1-1/4" SERR FLG	9
6	53302-12	PLATE, FAN SUPPORT	1
7	15382	BOLT, 3/8 X 1" SERR. FLNG GR5 NC ZP	2
8	29854-00	SHAFT, MACHDON LH DRIVE	1
9	29990-12	GEARBOX SHIELD WELDMENT	1
10	53301-00	ASSEMBLY, GEARBOX MOUNT (INCLUDES ITEMS 11-15)	1
11	53298-12	BRACKET, GEARBOX MOUNT	1
12	53300-12	BRACKET, GEARBOX SUPPORT	1
13	0101-0100-00	NUT, 1/2" NYLOCK	11
14	15013	BOLT, 1/2 X 1-1/4" HEX HD	11
15	53299-12	PLATE, GEARBOX MOUNT	1
	24039	ASSEMBLY, SHIELD MOUNT PLATE (INCLUDES ITEMS 16 & 17)	1
16	15402	NUT, 5/16-18" TINNERMAN U-TYPE	3
17	24038-12	SHIELD MOUNT PLATE	1
18	15345	BOLT, 5/16 X 3/4" SERR FLG GR5 ZP	3
19	24037-12	SLIP CLUTCH SHIELD	1
20	24492-12	BRACKET, DRIVELINE SUPPORT	1
21	15076	SCREW, 3/8-16 X 1" LG THD CUTT ZP	2
22	29823-00	DLINE/CLUTCH-XL ASSY. (1-3/8 21 SPL) (SEE PAGES 8-9)	1

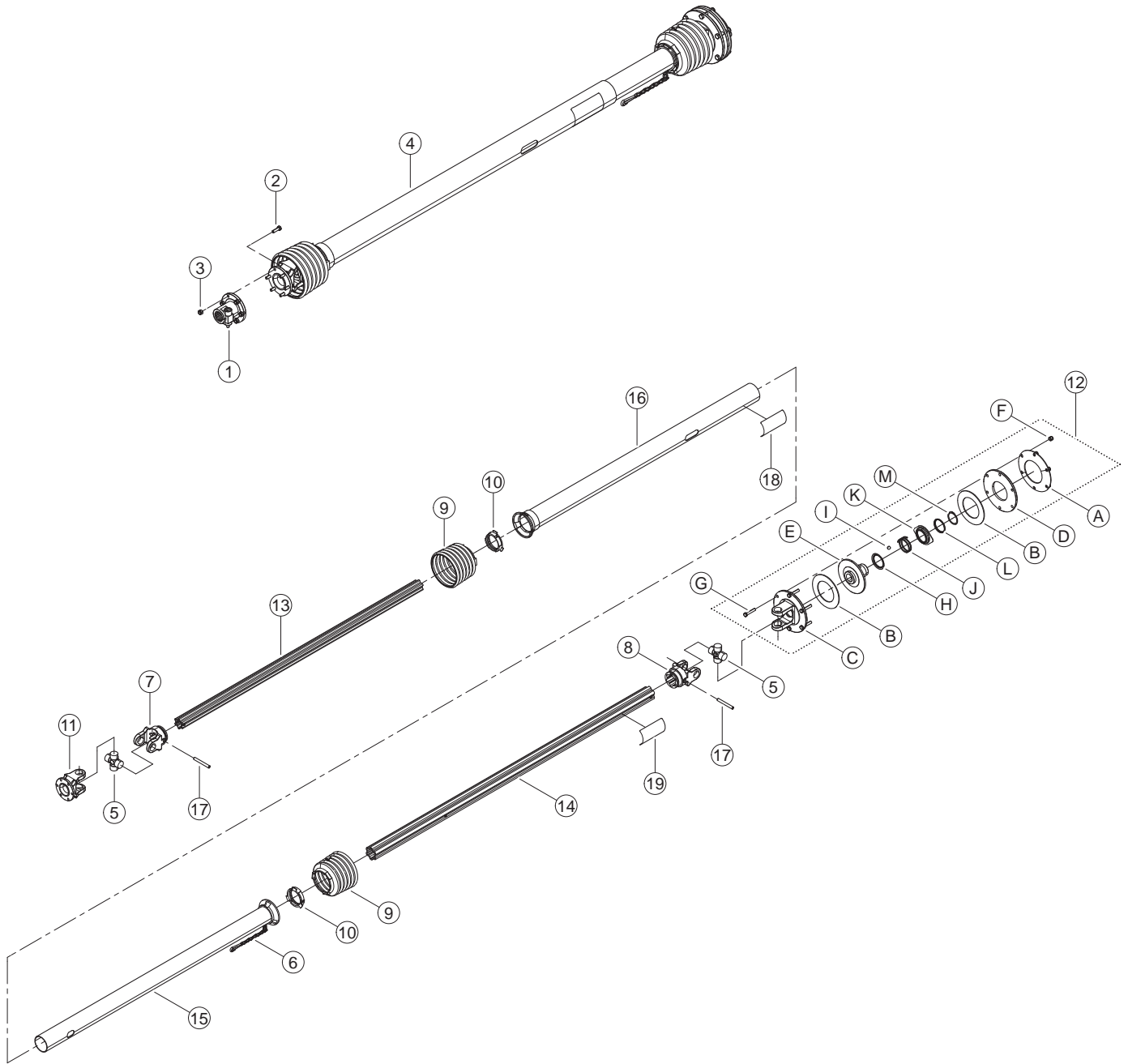


NOTE: GEARBOX SERIAL NUMBER TAG SHOULD BE ON SAME SIDE AS FAN OUTLET

GEARBOX/FAN (29995-00)			
ITEM	PART NUMBER	DESCRIPTION	QTY
1	13460-00	ACTUATOR, 2" STROKE ELECTRIC	1
2	15001	BOLT, 1/4*3/4 GR5 HEX HD ZP	4
3	15014	BOLT, 1/2 X 1-1/2 HEX HD GR5 ZP	4
4	15049	NUT, 1/2" CENTERLOCK GRB ZP	4
5	15051	NUT, 3/8" SERRATED FLANGE NC ZP	12
6	15053	NUT, 1/4"-20 SERRATED FLNG NC ZP	4
7	15055	NUT, 3/4" NF CASTLE ZP	1
8	15068	PIN 5/32*1 1/4 COTTER PIN ZP	1
9	15076	SCREW,3/8-16*1"LG THD CUTT ZP	8
10	15087	NUT, 1/4 CENTERLOCK NC ZP	2
11	15095	SCREW #14 * 1/2 TAPPING HWH ZP	3
12	15098	WASHER,3/4"SAE FLAT ZP,21PC/LB	2
13	15099	WASHER,7/8"SAE FLAT,ZP,15PC/LB	2
14	15342	BOLT 1/4 X 1-1/2 HHCS GR5 ZP	2
15	15351	NUT, 5/16 SERR FLNG NC ZP	4
16	15364	BOLT, 3/8 X 1-1/4" HEX HD GR5 ZP	12
17	15367	BOLT, 5/16X3/4 GR5 NC ZP CRG	4
18	15397	NUT, 10/24 NYLOCK TYPE NM, ZP	4
19	15552	BOLT,10-24 * 1" GR8 HCPS PLAIN	4
20	17705	FAN ROTOR, 17.38" X 3" CCW,7/8,STL.	1
21	18998-00	BEARING, 3/4" ROUND INSERT	2
22	21193	8"FAN RH SIDE W/BUTTERFLY	1
23	21194	8"FAN LH SIDE W/BUTTERFLY	1
24	21445	PLATE,HUB/MOTOR MT.(8"B-PILOT)	1
25	22327	GEAR BOX, 9.37:1	1
26	22655	BASE,8"ROTARY SCREEN	1
27	23163	SCREEN CAP WELDMENT	1
28	25592-12	WRAP, ROTARY SCREEN	1
29	25644-12	WELDMENT, ACTUATOR MOUNT	1
30	27532-12	WELDMENT, SCREEN/BLADE (8"-LH)	1
31	29917-12	WELDMENT,8"ROTARY SCRNB.BASE STRAP	1
32	29919-12	WELDMENT, PIVOT	1
33	29921-12	WELDMENT, 8" FAN SCREEN CLEANER	1
34	36008-00	FLANGETTE, 47MM 2 HOLE	4
35	53744-00	WELDMENT, BUTTERFLY SHAFT (8")	1
36	53750-35	WELDMENT, INDICATOR (8")	1
37	53751-12	WELDMENT, VALVE ACTUATOR (8"LH)	1
38	7022	KEY, 3/16 SQ X 1-1/4" PLAIN	1

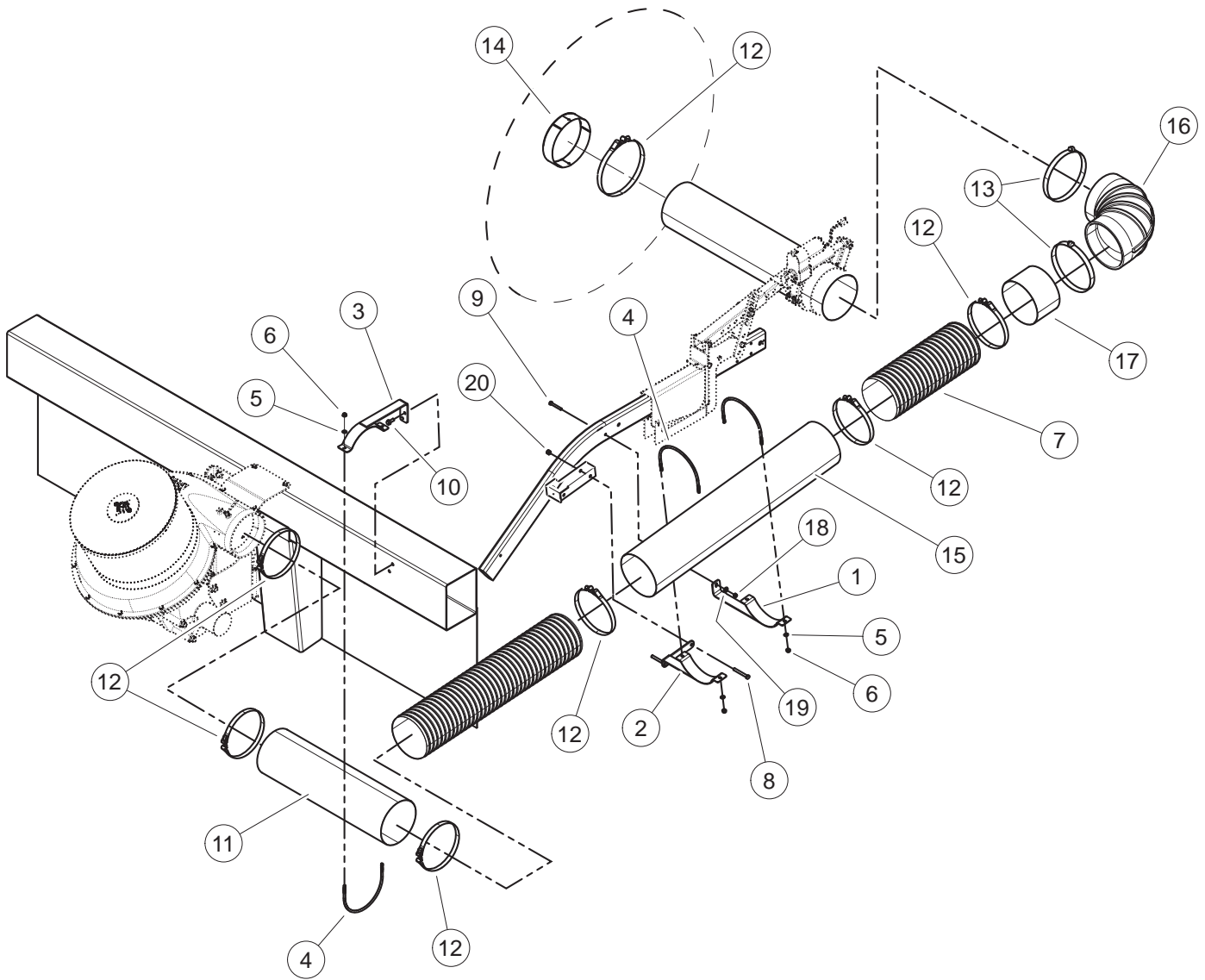


GEARBOX (REPLACEMENT PARTS)			
ITEM	PART NUMBER	DESCRIPTION	22327 QTY
1	16807	66 GEAR, SP BEV LH 19T	1
2	NPN	66 GEAR, SP BEV RH 29T	1
3	36222-00	11 NUT, LOCK 3/4" NF	1
4	NPN	66 SHIM, .002 RED	2
5	NPN	66 SHIM, .005 BLUE	2
6	NPN	SPEC. HOUSING, SUB-ASSEMBLY	1
7	NPN	SPEC. HOUSING, PINION	1
8	NPN	SPEC. CAP, OPEN	2
9	NPN	SPEC. CAP, CLOSED	2
10	16821	SPEC. SLEEVE, INPUT	1
11	16820	SPEC. SHAFT, OUTPUT PINION	1
12	NPN	SPEC. GEAR INTG HEL LH 14T	1
13	NPN	SPEC. GEAR, HEL RH 81T	1
14	NPN	SPEC. SPACER	1
15	NPN	SPEC. SHIM, .002 RED	4
16	NPN	SPEC. SHIM, .005 BLUE	4
17	NPN	SPEC. SHIM, .002 RED	4
18	NPN	SPEC. SHIM, .005 BLUE	4
19	16815	BEARING, BALL 206NPP OR EQUIVALENT	2
20	0201-0077-00	BEARING, 2.328 X .465 CUP	2
21	16817	BEARING, CUP 27620 OR EQUIVALENT	2
22	0201-0078-00	BEARING, 1.250 X .660 CONE	2
23	16819	BEARING, CONE 27687 OR EQUIVALENT	2
24	NPN	SCREW, 3/8" X 1" NC HHCS GR5	4
25	NPN	SCREW, 5/16" X 1" NC HHCS GR5	20
26	NPN	SCREW, 3/8" X 1-1/4" NC HHCS GR5	8
27	NPN	WASHER, 3/4" X 1-1/2" X 1/8"	1
28	NPN	WASHER, 1-17/64" X 1-3/4" X 1/8"	2
29	NPN	NUT, 3/8" NC HEX	8
30	NPN	KEY, 1/4" SQUARE X 15/16" P&W	1
31	NPN	KEY, 3/4" SQUARE X 1-1/2" SQUARE END	1
32	NPN	KEY, 1/4" X 1" WOODRUFF	1
33	16814	RING, RETAINING 5160-118	1
34	31534-00	RING, BEVELED RETAINING N5002-244	1
35	NPN	OIL, MOBILUBE SHC 75W-90	40 OZ.
36	NPN	PLATE, NAME, CRARY	1
37	NPN	PAINT, FLAT BLACK	5.120 OZ.
38	31531-00	PLUG, PIPE SOCKET 1/4 NPT	2
39	31532-00	PLUG, PIPE 1/2" O-RING BOSS	3
40	31533-00	PLUG, 1/8-27 VENTED PIPE	1
41	16625	SEAL, 472681 OR EQUIVALENT	1
42	16624	SEAL, 32395 OR EQUIVALENT	2
43	31535-00	O-RING, -044	1
44	NPN	O-RING, -158	2
45	NPN	O-RING, -138	2
46	NPN	SCREW, 5/16" X 3/4" NC HHCS GR5	1
47	NPN	TAG, LUBRICATION	1
	16125	GEARBOX SEAL AND SHIM KIT (INCLUDES ITEMS 4, 5, 15, 16, 17, 18, 41, 42, 43, 44 & 45)	1
	25320	GEARBOX, REBUILT (22327/9.37:1) (NOT SHOWN)	1
	16621	GEARBOX GEAR KIT (9.375:1) (INCLUDES ITEMS 1, 2, 12 & 13)	1

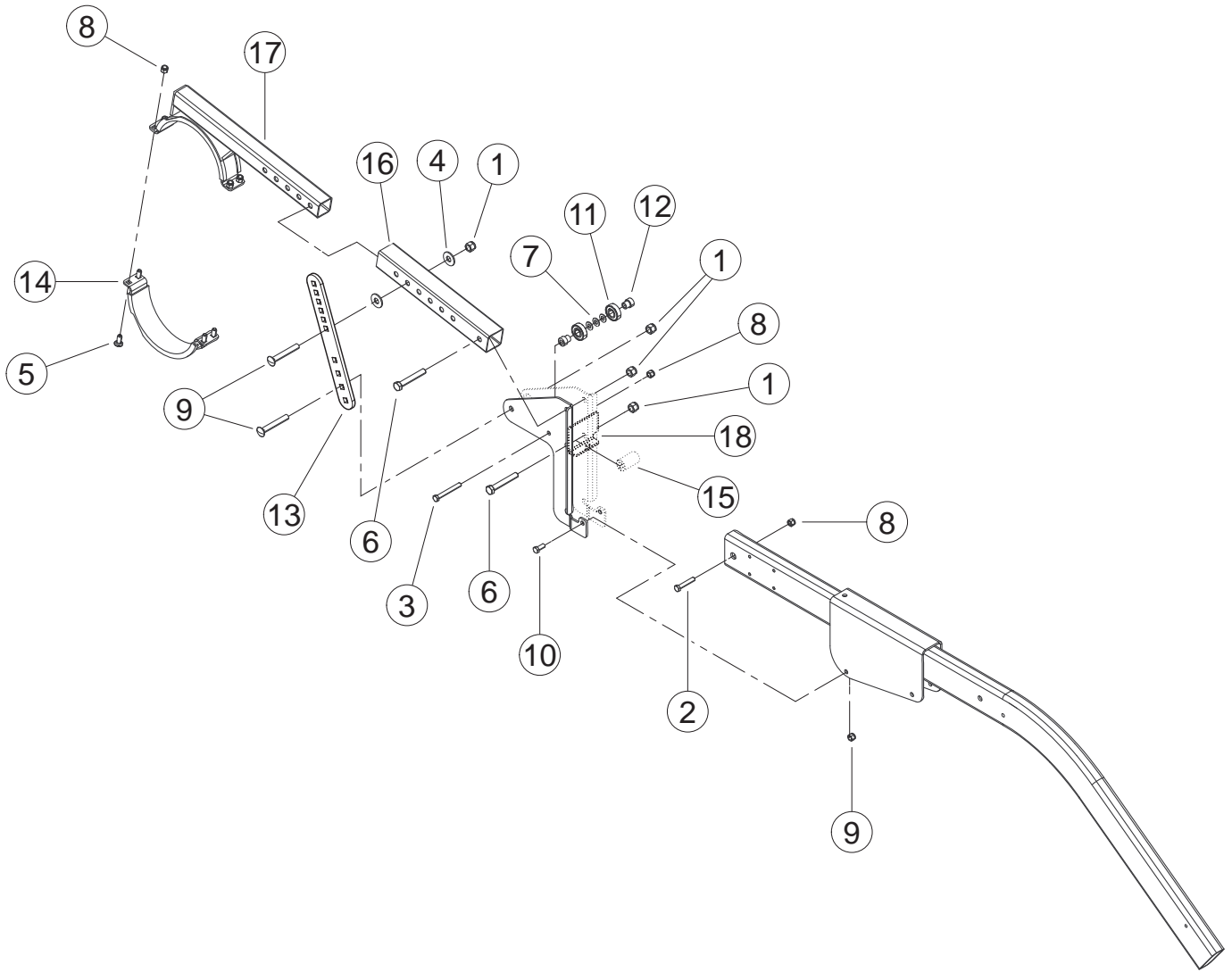


DRIVELINE/C-FLANGE ASSEMBLY			
ITEM	PART NUMBER	DESCRIPTION	29823-00 QTY
1	13914-00	COUNTER FLANGE, 1-3/8" 21 SPLINE	1
2	15219	BOLT, 5/16 X 1 HEX HD GR5 ZP	6
3	15356	NUT, 5/16 NE NYLOCK ZP	6
4	18977-00	DRIVELINE/CLUTCH, 1-3/8" 6 SPLINE(XL) (SEE TABLE BELOW)	1

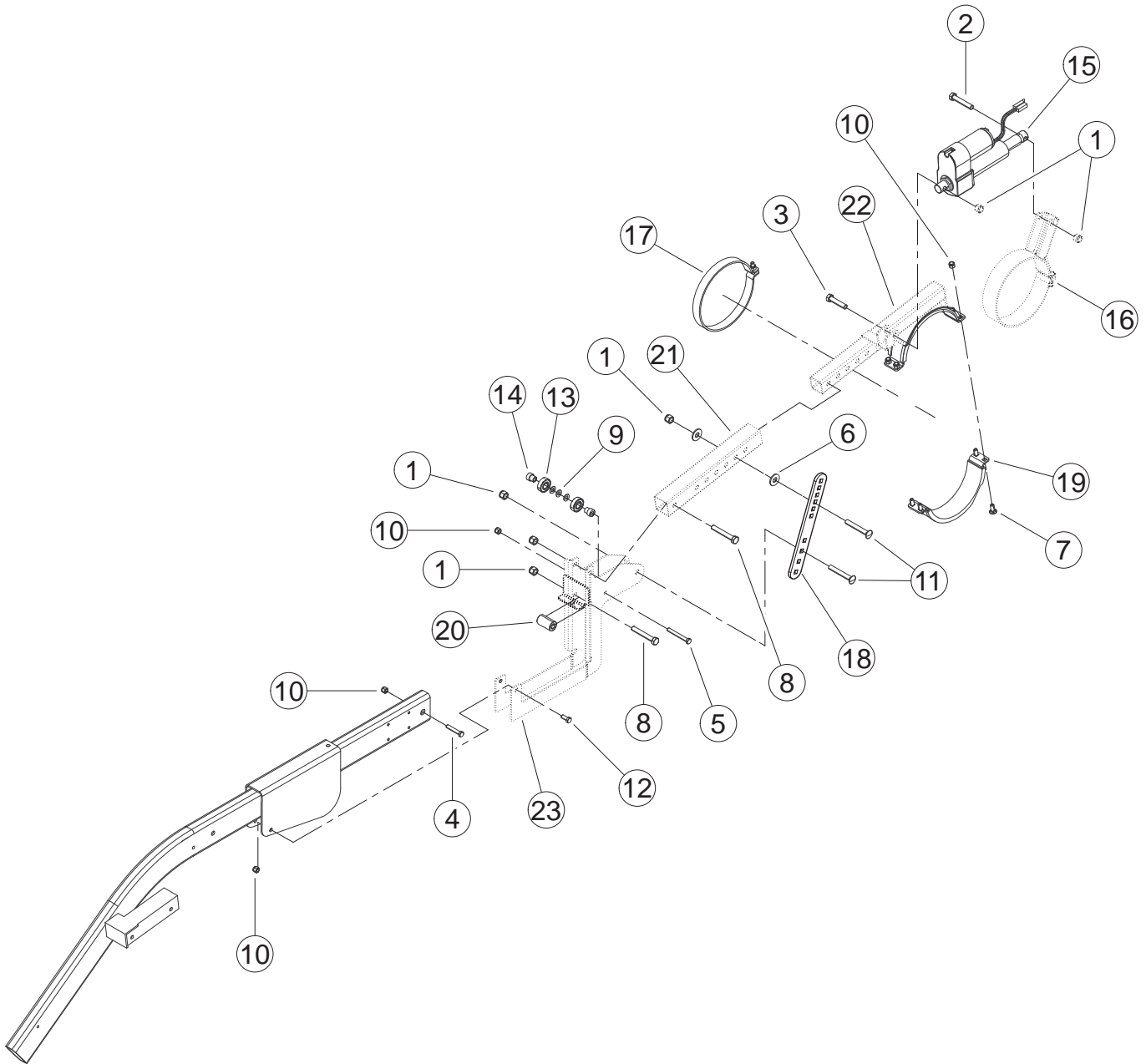
ASSEMBLY, DRIVELINE/CLUTCH			
ITEM	PART NUMBER	DESCRIPTION	18977-00 QTY
5	0883-0120-00	KIT, CROSS & BEARING W-2400	2
6	12209	SAFETY CHAIN	1
7	18967-00	YOKE, INBOARD S4	1
8	18970-00	YOKE INBOARD S5	1
9	12220	CONE, 6 RIB SAFETY	2
10	12232	RING, SC25 BEARING	2
11	14714-00	YOKE, FLANGE	1
12	14744-00	CLUTCH, FRICTION (INCLUDES ITEMS A-M)	1
A	14061-00	SPRING, BELVILLE (W/SHIELD)	1
B	14062-00	SET, FRICTION DISC	1
C	14720-00	YOKE, FLANGE	1
D	14736-00	PLATE, THRUST	1
E	14737-00	HUB, CLUTCH	1
F	15647	NUT, M10 X 1.5 HEX NYLOCK TYPE NE	6
G	15747-00	BOLT, M10 X 1.5 X 50 CLASS 8.8 HC	6
H	14738-00	BACKUP RING	1
I	14739-00	BALL, CLUTCH	3
L	14740-00	SPRING, COMPRESSION	1
K	14741-00	COLLAR, LOCK	1
L	14742-00	RING, BACKUP	1
M	14743-00	RING, SNAP	1
13	18968-00	PROFILE, INNER S4LGA	1
14	18969-00	PROFILE, OUTER S5L	1
15	18972-00	TUBE, INNER SHIELD ROUND	1
16	18971-00	TUBE, OUTER SHIELD OVAL	1
17	15575	PIN, M10 X 80 SPRING	2
18	12210	DECAL, OUT	1
19	12211	DECAL, IN	1



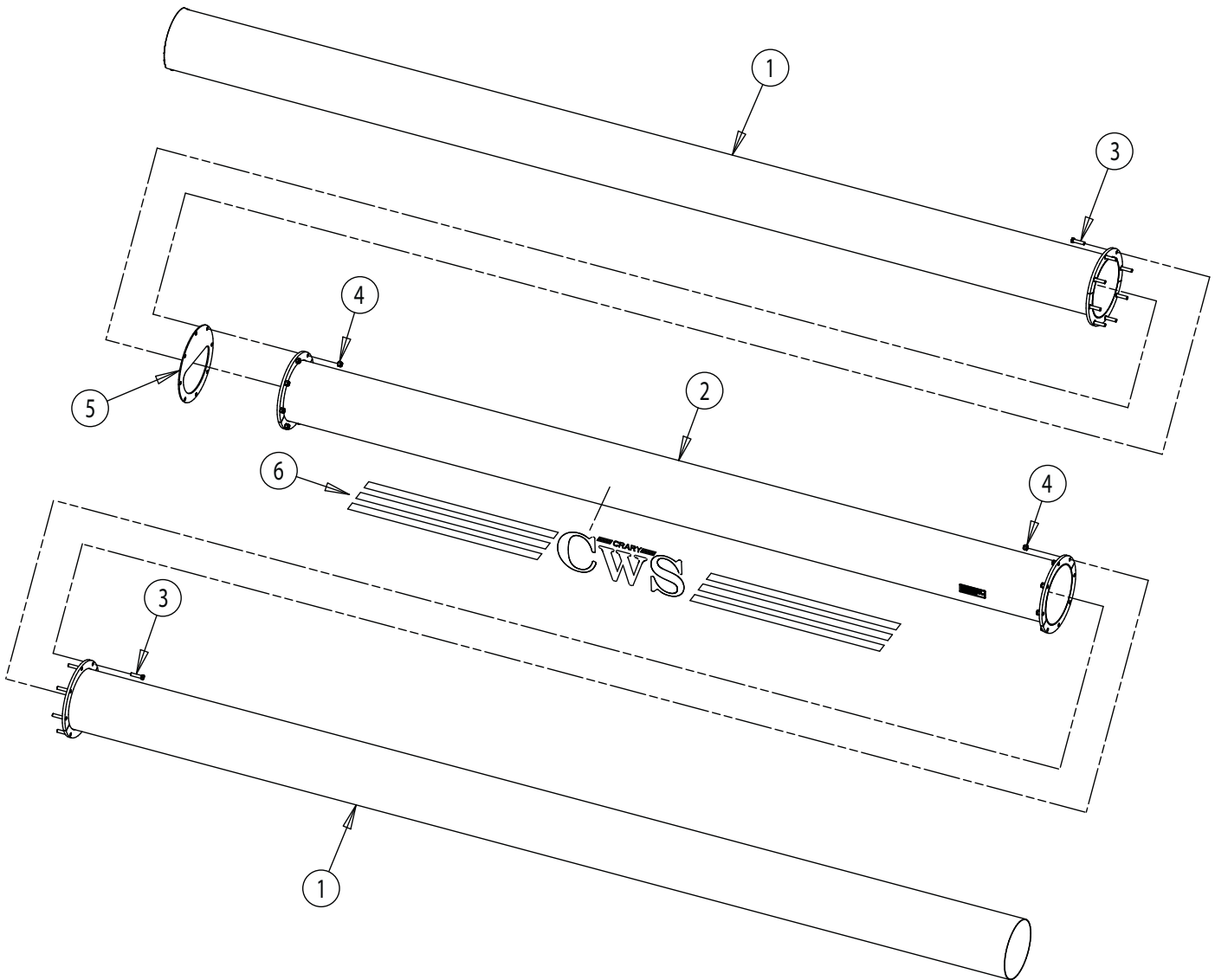
FAN HOSE ASSEMBLY				
ITEM	PART NUMBER	DESCRIPTION	30' QTY	36' QTY
1	26171-12	TUBE MOUNT WELDMENT	1	1
2	53316-12	TUBE MOUNT WELDMENT	1	1
3	53304-12	TUBE MOUNT WELDMENT	1	1
4	15700-00	U-BOLT, 5/16-18 X 8.19 X 6.59	3	3
5	15416	WASHER, 5/16" SAE FLT ZP	6	6
6	15351	NUT, 5/16" SERR FLNG NC ZP	6	6
7	17777	FLEX HOSE 8" ID X 8' FT.	1	1
8	15009	BOLT, 3/8 X 3" GR5 HEX CAPSCREW ZP	2	2
9	15754-00	BOLT, 5/16-18 X 2-1/4" GR5 HCPS	1	1
10	15382	BOLT, 3/8 X 1" SERR. FLNG GR5 NC ZP	2	2
11	53067-33	MANIFOLD, 28" ALUMINUM	1	
	25844-33	MANIFOLD, 79" ALUMINUM		1
12	16091	T-BOLT CLAMP 8-3/8"	7	7
13	16092	CLAMP, 8-11/16" T-BOLT	2	2
14	21924	CAP, TUBE-8" (NOTCHED)	1	1
15	25837-33	MANIFOLD, 40" ALUMINUM	1	1
16	17437	MANIFOLD ELBOW, -8" (MR)	1	1
17	21512	ELBOW BAND SUPPORT	1	1
18	15356	NUT, 5/16" NE NYLOCK ZP	1	1
19	15250	WASHER, 5/16" FLAT ZP	1	1
20	15388	NUT, 3/8" NE NYLOCK ZP	2	2



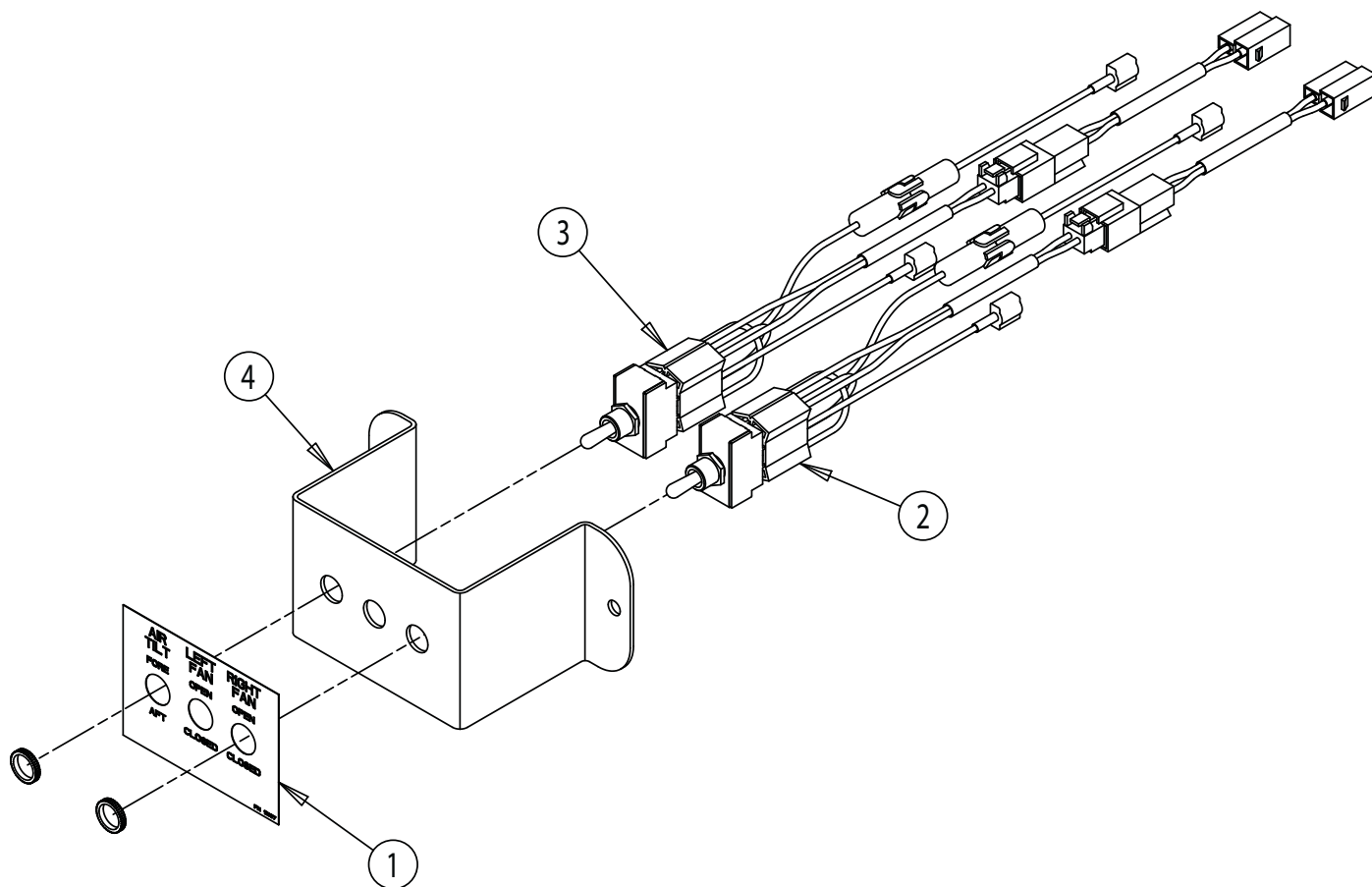
REEL ARM MOUNT KIT, LH PARTS (53318)			
ITEM	PART NUMBER	DESCRIPTION	QTY
1	0101-0100-00	NUT, 1/2 UNC NYLOCK	4
2	15008	BOLT, 3/8 X 2 HEX HD GR5 ZP	1
3	15009	BOLT, 3/8 X 3 HEX HD GR5 ZP	1
4	15034	WASHER, 1/2 FLAT ZP	2
5	15057	BOLT, 3/8 X 1 CRG GR5 ZP	4
6	15173	BOLT, 1/2 X 3-1/4 HCS GR5 ZP	2
7	15260	WASHER, 3/8 SAE FLAT ZP	3
8	15388	NUT, 3/8 NE NYLOCK ZP	8
9	15458	BOLT, 1/2 X 3-1/2 CRG GR5 NC ZP	2
10	15620	BOLT, 3/8 X 7/8 HCPS GR5	2
11	17669	RADIAL BEARING 17MM	2
12	17670	SHOULDER BORE ADAPTOR	2
13	25815-12	STRAP, ADJUSTMENT - S	1
14	25908-00	ASSY', HALF CLAMP	1
15	27936-12	BUSHING, 1/2" X 1-1/8" X 2"	1
16	53134-12	TUBE, ARM MOUNT	1
17	53136-00	ASSY', LH REEL MOUNT - JD600 (CWS)	1
18	53307-12	WELDMENT, LH MOUNT (JD900D)	1



REEL ARM MOUNT KIT, RH PARTS (53318)			
ITEM	PART NUMBER	DESCRIPTION	QTY
1	0101-0100-00	NUT, 1/2 UNC NYLOCK	6
2	0103-0756-00	BOLT, 1/2 X 2-3/4 HEX HD GR5 ZP	1
3	0103-0792-00	BOLT, 1/2 X 2-1/4 HEX HD GR5 ZP	1
4	15008	BOLT, 3/8 X 2 HEX HD GR5 ZP	1
5	15009	BOLT, 3/8 X 3 HEX HD GR5 ZP	1
6	15034	WASHER, 1/2 FLAT ZP	2
7	15057	BOLT, 3/8 X 1 CRG GR5 ZP	4
8	15173	BOLT, 1/2 X 3-1/4 HCS GR5 ZP	2
9	15260	WASHER, 3/8 SAE FLAT ZP	3
10	15388	NUT, 3/8 NE NYLOCK ZP	8
11	15458	BOLT, 1/2 X 3-1/2 CRG GR5 NC ZP	2
12	15620	BOLT, 3/8 X 7/8 HCPS GR5	2
13	17669	RADIAL BEARING 17MM	2
14	17670	SHOULDER BORE ADAPTOR	2
15	17843	ELECTRIC ACTUATOR	1
16	22479	ASSY', PIVOT CLAMP	1
17	22489	ASSY', BRACE CLAMP	1
18	25815-12	STRAP, ADJUSTMENT - S	1
19	25908-00	ASSY', HALF CLAMP	1
20	27936-12	BUSHING, 1/2" X 1-1/8" X 2"	1
21	53134-12	TUBE, ARM MOUNT	1
22	53135-00	ASSY', RH REEL MOUNT - JD600 (CWS)	1
23	53310-12	WELDMNT, RH MOUNT (JD900D)	1

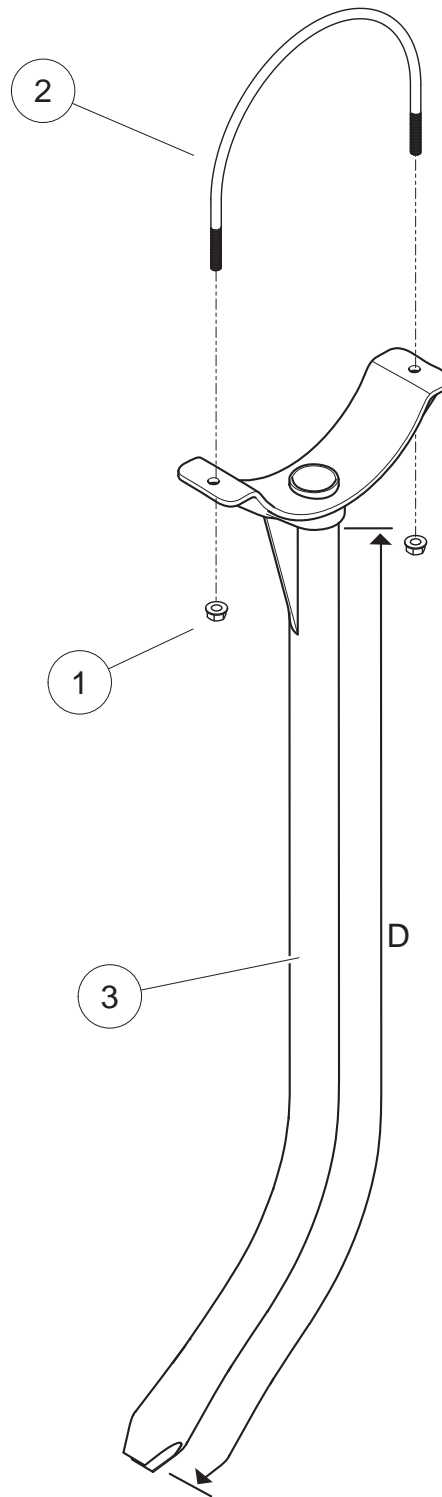


SECTIONAL MANIFOLD					
ITEM	PART NUMBER	DESCRIPTION	53325 30 FT (12") QTY	53314 36 FT. (12") QTY	
1		WELDMENT, 30 FT. (XL) CWS RH/LH MANIFOLD (12")	2		
		WELDMENT, 35/36 FT. CWS RH/LH MANIFOLD (12")		2	
2	27496-00	ASSEMBLY, 25/30 FT. CWS CENTER MANIFOLD (12") (INCLUDES ITEMS 3-6)	1		
	53313-00	ASSEMBLY, 36 FT. CWS CENTER MANIFOLD (12") (INCLUDES ITEMS 3-6)		1	
3	15007	BOLT, 3/8" X 1-1/2" HHCS GR5 ZP	16	16	
4	15388	NUT, 3/8" NE NYLOCK ZP	16	16	
5	27214-00	PLATE, CONNECTOR/BAFFLE	1	1	
6	14077-00	DECAL, CWS LOGO (YELLOW)	1	1	



SWITCH/MOUNT PLATE ASSEMBLY (24333)			
ITEM	PART NUMBER	DESCRIPTION	QTY
1	12167	DECAL, ACTUATOR SWITCH	1
2	17849	ELECTRIC SWITCH ASSEMBLY - SPLIT 6 AMP (INCLUDES ITEM BELOW)	1
	13901	SWITCH, 3P COL HERS 55065-03 (NOT SHOWN)	1
3	17850	ELECTRIC SWITCH ASSEMBLY - SPLIT 15 AMP (INCLUDES ITEM BELOW)	1
	13901	SWITCH, 3P COL HERS 55065-03 (NOT SHOWN)	1
4	24332-12	PLATE, SWITCH MOUNT	1

ATTACHMENT, 9 FT. EXTENSION HARNESS			
ITEM	PART NUMBER	DESCRIPTION	QTY
	18048-00	HARNESS, 9 FT PACKARD EXT	1



DROP TUBE KIT			
ITEM	PART NUMBER	DESCRIPTION	QTY.
	25920	KIT, LONG DROP TUBE (INCLUDES ITEMS BELOW) D=42'	
1	15351	NUT, 5/16" SERRATED FLANGE NC ZP	2
2	15700-00	U-BOLT, 5/16-18 X 8.19" X 6.59"	1
3	25832-00	ASSEMBLY, LONG AIR TUBE	1
	17313	FOAM SEAL-AIR TUBE (NOT SHOWN)	1
	25919	KIT, SHORT DROP TUBE (INCLUDES ITEMS BELOW) D=36"	
1	15351	NUT, 5/16" SERRATED FLANGE NC ZP	2
2	15700-00	U-BOLT, 5/16-18 X 8.19" X 6.59"	1
3	25831-00	ASSEMBLY, SHORT AIR TUBE	1
	17313	FOAM SEAL-AIR TUBE (NOT SHOWN)	1

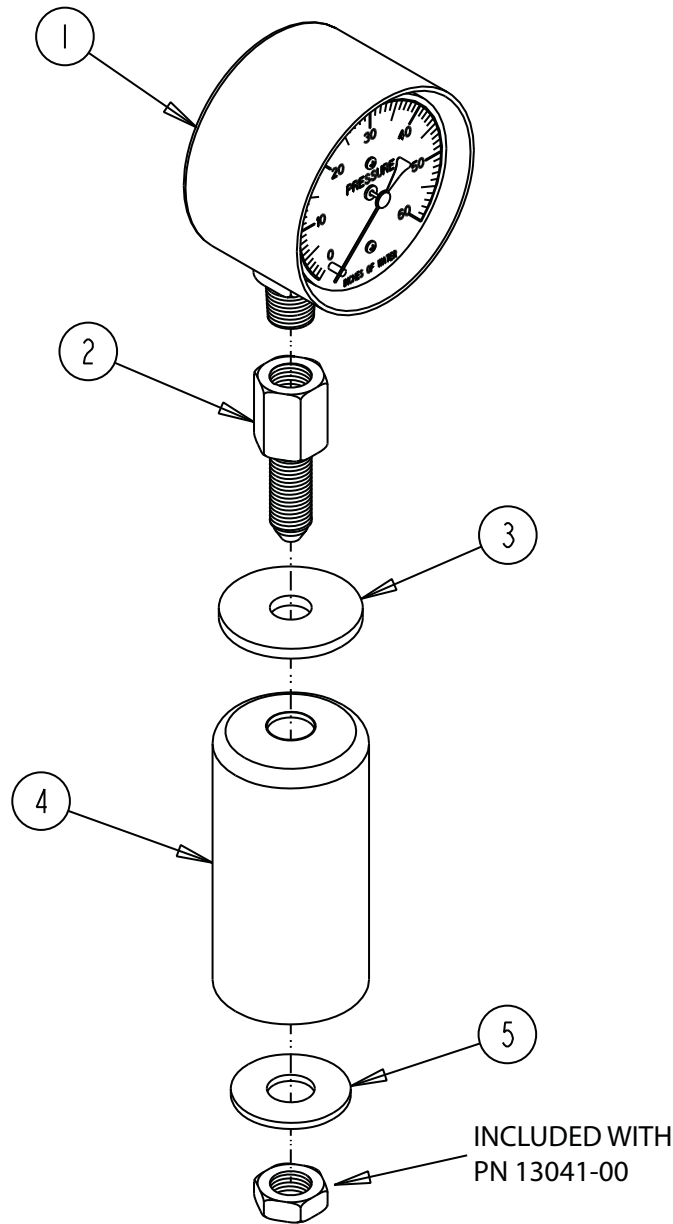
KIT, EXTRA LONG DROP TUBE (54647) D=49'			
ITEM	PART NUMBER	DESCRIPTION	QTY.
1	15351	NUT, 5/16" SERRATED FLANGE NC ZP	2
2	15700-00	U-BOLT, 5/16-18 X 8.19" X 6.59"	1
3	54648-00	WELDMENT, EXTRA LONG AIR TUBE	1
	17313	FOAM SEAL-AIR TUBE (NOT SHOWN)	1

MANIFOLD LENGTH	TOTAL OF BOTH LONG AND SHORT DROP TUBES		OR	EXTRA LONG ONLY
	# OF SHORT DROP TUBES (25919)	# OF LONG DROP TUBES (25920)		# OF EXTRA LONG DROP TUBES (25920)
30' (12" TUBE SPACING)	15	16		31
36' (12" TUBE SPACING)	16	20		36

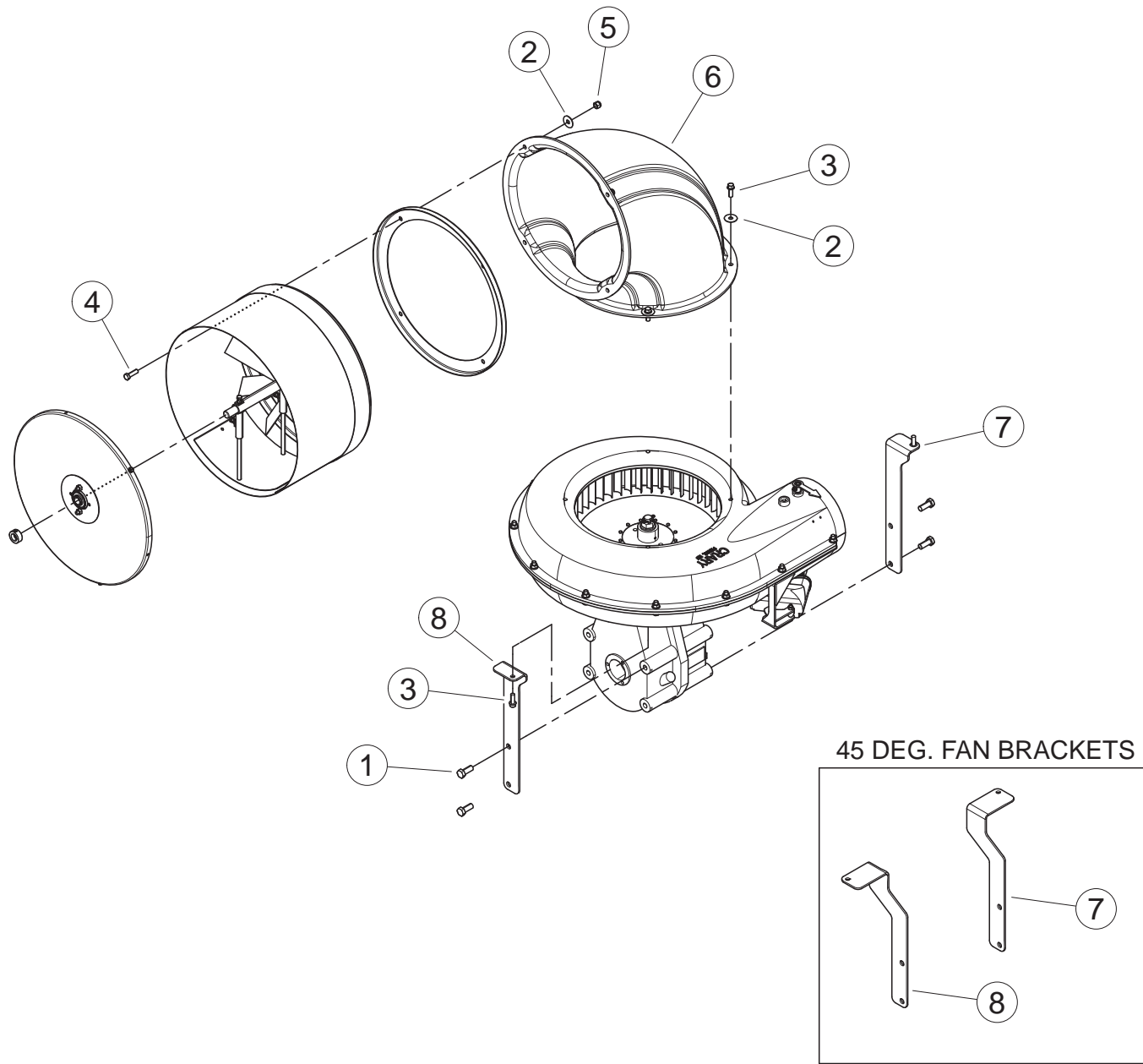


Parts Catalog Crary Wind System

OPTIONS



ASSEMBLY, STATIC PRESSURE GAGE (53094-00)			
ITEM	PART NUMBER	DESCRIPTION	QTY
1	36195-00	GAGE, LOW PRESSURE AIR	1
2	13041-00	ADAPTOR, -4FMNPT/-4MJIC BULKHEAD	1
3	0937-0013-00	WASHER, .438 X 1.500 X .125	1
4	53093-00	GRIP, ROUND VINYL (W/HOLE)	1
5	15032	WASHER, 7/16 FLAT	1



KIT, SCREEN ELBOW				
ITEM	PART NUMBER	DESCRIPTION	54041 QTY.	54292 45 DEG. QTY.
1	15013	BOLT, 1/2*1-1/4" GR5 HHCS NC ZP	4	4
	15478	BOLT, 1/2X1 3/4 GR5 HCPS NC ZP	4	4
2	15041	WASHER, 3/8" FENDER ZP-32PCS/LB	8	8
3	15076	SCREW,3/8-16*1"LG THD CUTT ZP	6	6
4	15364	BOLT, 3/8 X 1-1/4" HEX HD GR5 ZP	4	4
5	15388	NUT, 3/8" NE NYLOCK ZP	4	4
6	31700-00	ELBOW, 90 DEG. INLET	1	1
7	54214-12	BRACKET, RH BRACE	1	
	54291-12			1
8	54215-12	BRACKET, LH BRACE	1	
	54290-12			1



Parts Catalog Crary Wind System

PARTS INDEX

Part #	Page(s)	Part #	Page(s)	Part #	Page(s)
0101-0100-00	3,13,15	16092	11	53307-12	13
0103-0756-00	15	16621	7	53310-12	15
0103-0792-00	15	17313	19	53313-00	16
0201-0077-00	7	17437	11	53314	16
0201-0078-00	7	17669	13,15	53316-12	11
0883-0120-00	9	17670	13,15	53317	3
0937-0013-00	22	17705	5	53318	13,15
7022	5	17777	11	53325	16
12167	17	17843	15	53744-00	5
12209	9	17849	17	53750-35	5
12210	9	17850	17	53751-12	5
12211	9	18048-00	17	54041	23
12220	9	18998-00	5	54214-12	23
12232	9	21193	5	54215-12	23
12457	3	21194	5	54290-12	23
13041-00	22	21445	5	54291-12	23
13460-00	5	21512	11	54292	23
13901	17	21924	11	54647	19
13914-00	9	22479	15	54648-00	19
14061-00	9	22489	15	15049	5
14062-00	9	23163	5	15051	5
14077-00	16	24037-12	3	15053	5
14714-00	9	24038-12	3	15055	5
14720-00	9	24332-12	17	15068	5
14736-00	9	24333	17	15087	5
14737-00	9	24492-12	3	15219	9
14738-00	9	25320	7	15356	9,11
14739-00	9	25592-12	5	15388	11
14740-00	9	25644-12	5	15397	5
14741-00	9	25815-12	13,15	15575	9
14742-00	9	25831-00	19	15647	9
14743-00	9	25832-00	19	15747-00	9
14744-00	9	25837-33	11	16125	7
15001	5	25844-33	11	16624	7
15007	16	25908-00	13,15	16625	7
15008	13,15	25919	19	16807	7
15009	11,13,15	25920	19	16814	7
15013	3,23	26171-12	11	16815	7
15014	5	27214-00	16	16817	7
15032	22	27496-00	16	16819	7
15034	3,13,15	27532-12	5	16820	7
15041	23	27936-12	13,15	16821	7
15057	13,15	29854-00	3	18967-00	9
15076	3,5,23	29917-12	5	18968-00	9
15095	5	29919-12	5	18969-00	9
15098	5	29921-12	5	18970-00	9
15099	5	29990-12	3	18971-00	9
15173	13,15	29995-00	5	18972-00	9
15250	11	31531-00	7	18977-00	9
15260	13,15	31532-00	7	22327	5,7
15342	5	31533-00	7	22655	5
15345	3	31534-00	7	24039	3
15351	5,11,19	31535-00	7	29823-00	3,9
15364	5,23	31700-00	23		
15367	5	36008-00	5		
15382	3,11	36195-00	22		
15388	13,15,16,23	36222-00	7		
15402	3	53067-33	11		
15416	11	53093-00	22		
15458	13,15	53094-00	22		
15478	23	53134-12	13,15		
15498	3	53135-00	15		
15552	5	53136-00	13		
15611	3	53298-12	3		
15612	3	53299-12	3		
15620	13,15	53300-12	3		
15700-00	11,19	53301-00	3		
15754-00	11	53302-12	3		
16091	11	53304-12	11		



237 12TH ST. NW • P.O. BOX 849
WEST FARGO, ND 58078-0849
PH: 1-800-247-7335 • FAX: (701) 282-9522
www.crary.com



Manufactured in the
United States of America
by Crary Industries